

# **Regional Conference -Roma Integration 2020-**

## **Case Study:**

### **Support to Roma, Ashkalia and Egyptian Communities in Mitrovicë/Mitrovica,**

A project funded by Swedish International Development Agency (Sida) and implemented by Danish Refugee Council, Kosovo\* Programme

Presented by Jasmina Dalipovic,  
Base Manager, DRC Kosovo\* Programme

\*This designation is without prejudice to positions on status, and is in line with UNSCR 1244 and the ICJ Opinion on the Kosovo declaration of independence

# Presentation Overview



Context

Beneficiary Needs

Supportive Measures

Project Overview

Project Orientation

Project Interventions

Challenges Foreseen

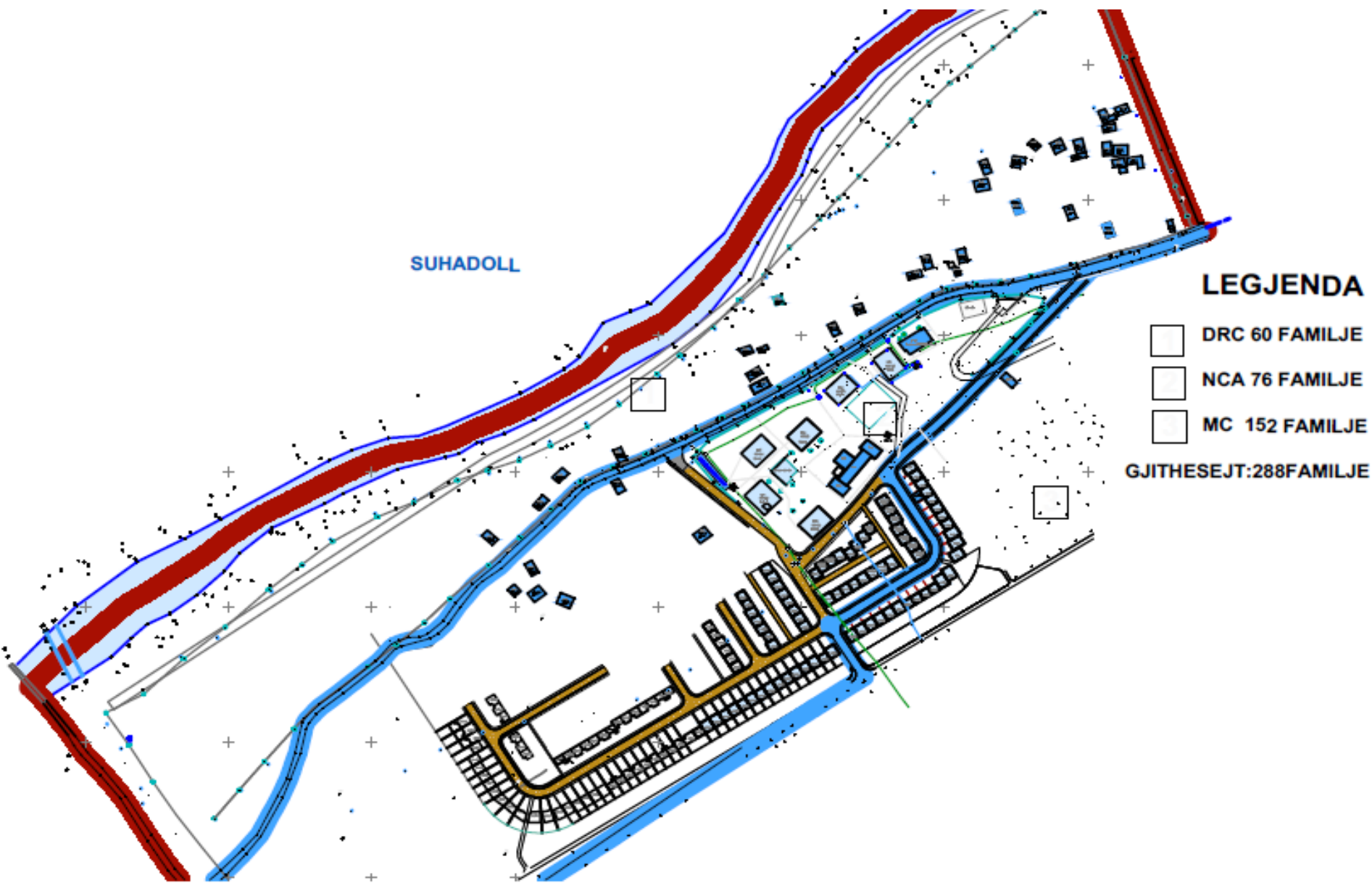
Lessons Learned

Contact DRC Kosovo\*

# CONTEXT

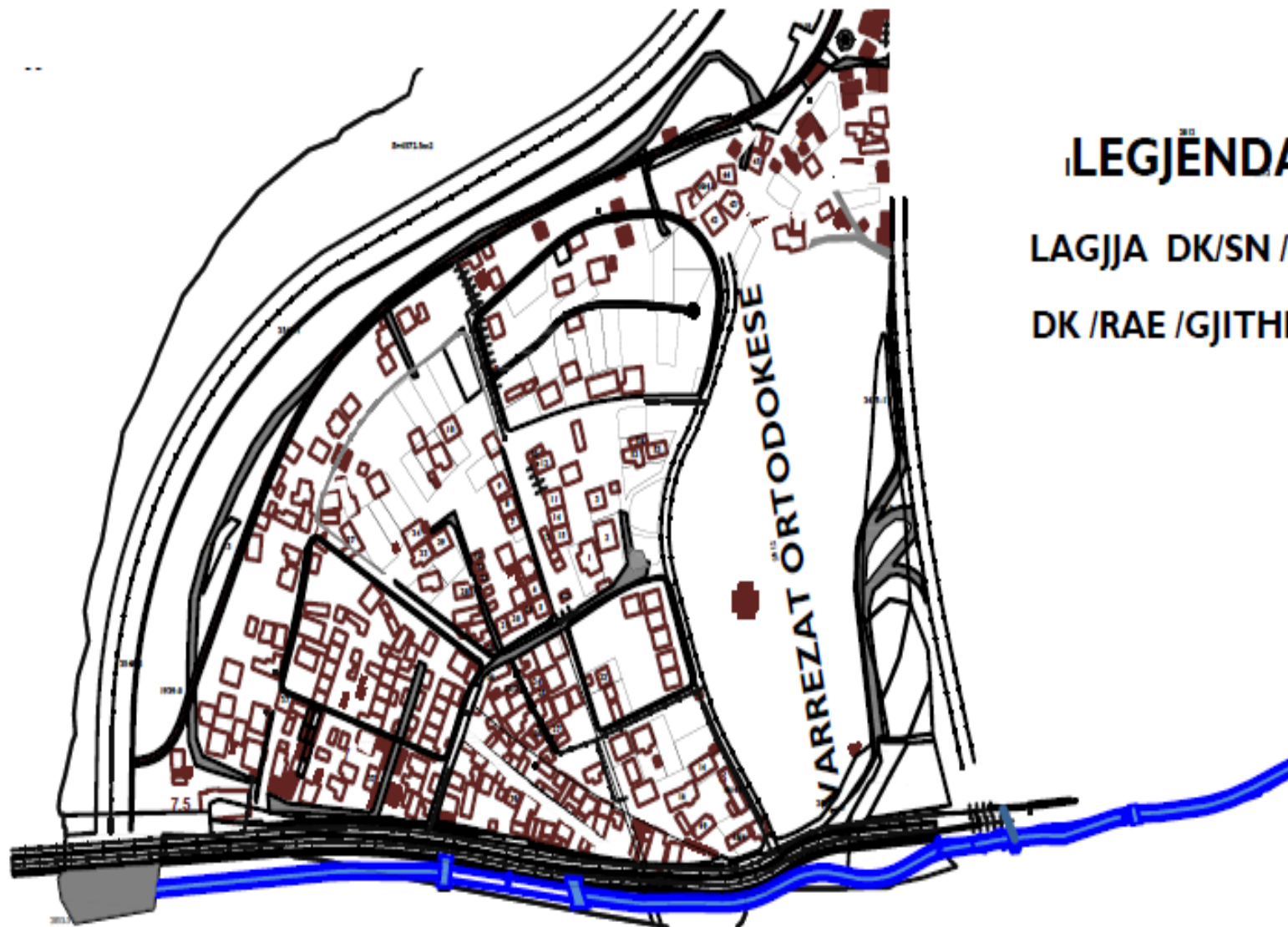
- During 1999 Roma Mahala displacement occurred due to the complete destruction of the settlements.
- Protracted displacement of ~ 8,000 Roma, Ashkalia and Egyptian individuals within camps, or the region or in Western Europe.
- From 2000 until 2013, numerous individuals from the Roma, Ashkali, and Egyptian communities returned to Kosovo\*, some voluntarily and some forcibly to the unsustainable housing solutions.
- Tense political and security environment in North and South Mitrovicë/a.
- Historical prejudice and difficulties in achieving a satisfactory level of integration into Kosovo\* society in terms of equal access to public services and opportunities for socio-economic development at the individual, family and community levels.
- Collapsed economy- limited employment opportunities and low levels of income.
- Health and living conditions in relation to environmental issues such as overall pollution owing to improper waste management.
- Exposure to lead contamination- many families were temporarily settled in camps in North Mitrovica, located near the Trepça complex, a large mining site for lead and other heavy metals, which caused to almost 90% of the children having elevated lead levels in their blood.

# Roma Mahala, Mitrovice/Mitrovica





## DyKorriku / Sitnicko Naselje, Mitrovice/a



### LEGJENDA

LAGJJA DK/SN / MITROVICE

DK /RAE /GJITHESEJT 55 SHTEPI

# BENEFICIARY NEEDS

- Underinvestment in productive capacity of minority communities;
- Economic isolation;
- Social / political isolation;
- Lack of appropriate skills for the job market;
- Lack of access to technical support (business / agricultural advisory services);
- Limited capacity and lack of institutional knowledge(particularly relevant to Roma, Ashkali and Egyptian NGOs);
- Lack of support from authorities to address the needs of minorities;
- Lack of information about opportunities as well as criteria governing public funding of civil society organizations;
- Poor interethnic relations that require constant attention, consultations and close coordination with the police and security forces;
- Lack of Gender and Environmental considerations in programming.

## SUPPORT MEASURES

Considering the complicated situation of the Roma, Ashkali, and Egyptian communities and the historical prejudice, many international and local organizations offered support measures towards sustainable integration solutions for these communities in Mitrovicë/a. Their projects focused on the following:

- ✓ resettlement of the communities to new or renovated homes,
- ✓ livelihood development,
- ✓ health promotion and lead treatment,
- ✓ support for education,
- ✓ support for employment,
- ✓ support to civil society;
- ✓ capacity building, etc.

# PROJECT ORIENTATION

- ❑ As set out in the “Guidelines for Swedish Assistance to the Roma population in the Western Balkans” the project was designed and implemented to tackle the four focus areas:
  - ❖ empowerment and participation of the Roma;
  - ❖ development and implementation of national Roma strategies;
  - ❖ poverty reduction; and
  - ❖ respect for human and minority rights.
- ❑ The framework within which DRC planned its activities was provided by EU instruments and policy documents, with particular reference to the *Framework Convention for the Protection of National Minorities*, which is “*directly applicable in Kosovo\* and takes precedence over Kosovo\* legislation*”



# PROJECT ORIENTATION

## Relevant Kosovo\* Legislation :

- ❖ The Strategy for Integration of Roma, Ashkali and Egyptian communities in Kosovo \* 2017-2020, including Roma, Ashkalia and Egyptian Integration Strategy 2009-2015
- ❖ Kosovo\* Education Strategic Plan 2011-2016 and Kosovo\* Education Strategic Plan 2017-2021 with its Strategic Objective/ SO 1 which calls for “Increasing participation and providing equal opportunities for the development, training, and education of every individual in pre-university education” as well as its Strategic objective / SO 6 which aims to address needs for vocational education and training and adult education.
- ❖ Fully in line with priorities for women and youth employment and activation outlined in the 2015-2020 Sectorial Strategy of the Ministry of Labour and Social Welfare (MLSW) and the Employment Agency of the Republic of Kosovo\* (EARK) Employment Policy 2016-2018
- ❖ SME Development Strategy of Kosovo\* 2012-2016, with a vision towards 2020, which calls for “Improving the position of female entrepreneurs, youngsters, minorities, specific group and support to entrepreneurs in disadvantaged zones” (Strategic goal 7).
- ❖ Kosovo\* Strategy for Cooperation with Civil Society (2013-2017)-this project provides huge effort continuously on implementation and making the strategy active.

# Project Overview

## Project Background   Overall Objective   Beneficiaries



- The project consists of multidimensional activities aimed at supporting Roma, Ashkalia and Egyptian communities from the two neighborhoods in Mitrovicë/a, Roma Mahala and DyKorriku / Sitnicko Naselje to reintegrate in Kosovo\* society.
- The project is funded by Sida, represented by the Swedish Embassy in Kosovo\*.
- Funds have been allocated to address the communities need for further reintegration support and attention by local authorities to ensure long-term sustainability of the communities.

## Project Overview

**Project Background      Overall Objective      Beneficiaries**



Empowering Mitrovicë/a Roma, Ashkalia and Egyptian communities, women, men, girls and boys, in a process that enhances their stabilisation and integration and assists the municipality in assuming their responsibilities towards its citizens, contributing to the communities' equality in respect to the rest of Kosovo\* citizens while progressively ensuring independence from external (international) aid.

# Project Overview

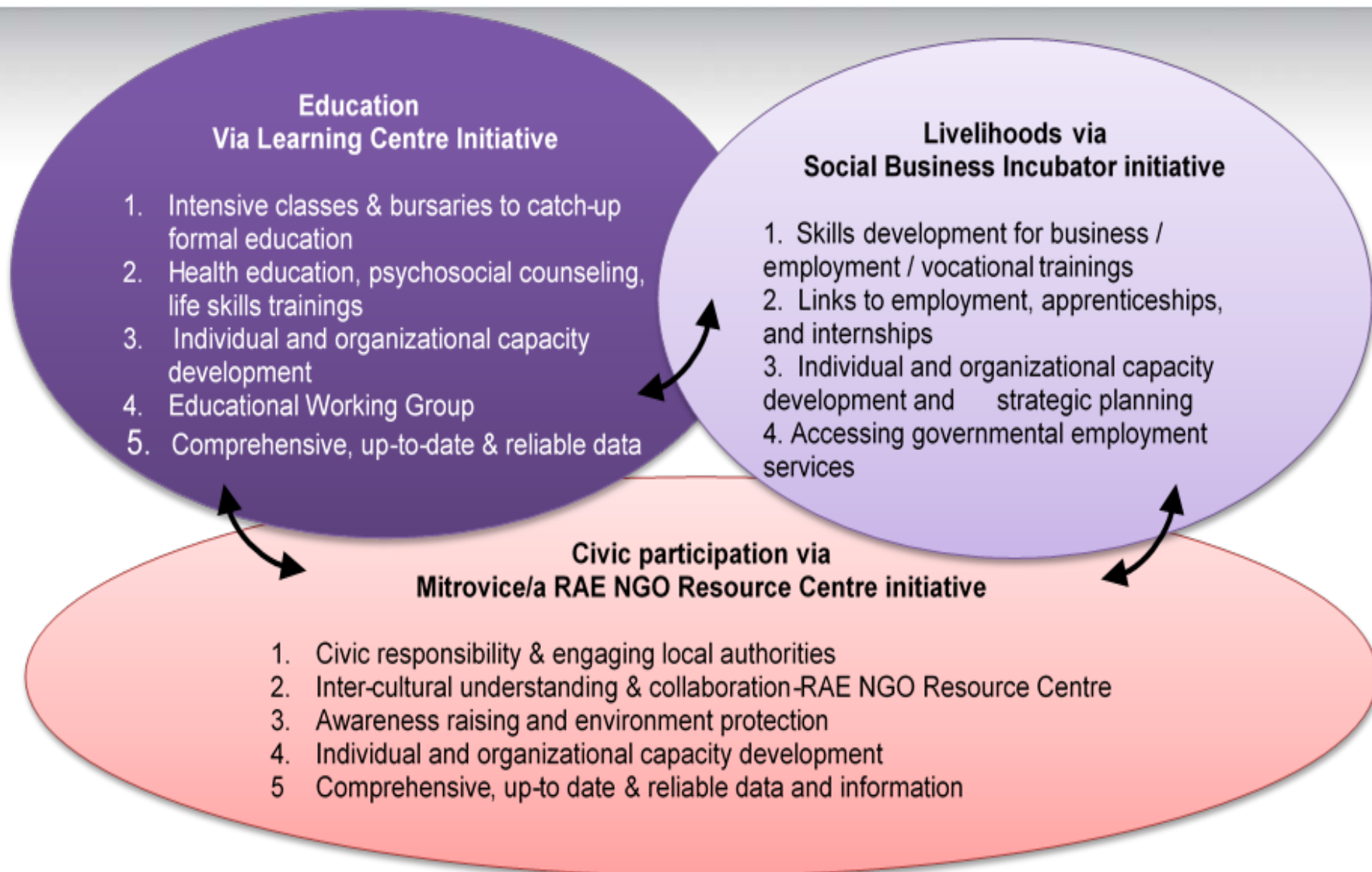
**Project Background   Overall Objective   Beneficiaries**



Direct beneficiaries: RAE women, men, girls and boys residing in DK/SN and RM settlements in Mitrovicë/a; the project aims at improving their conditions by bridging the gap that separates them from mainstream society.

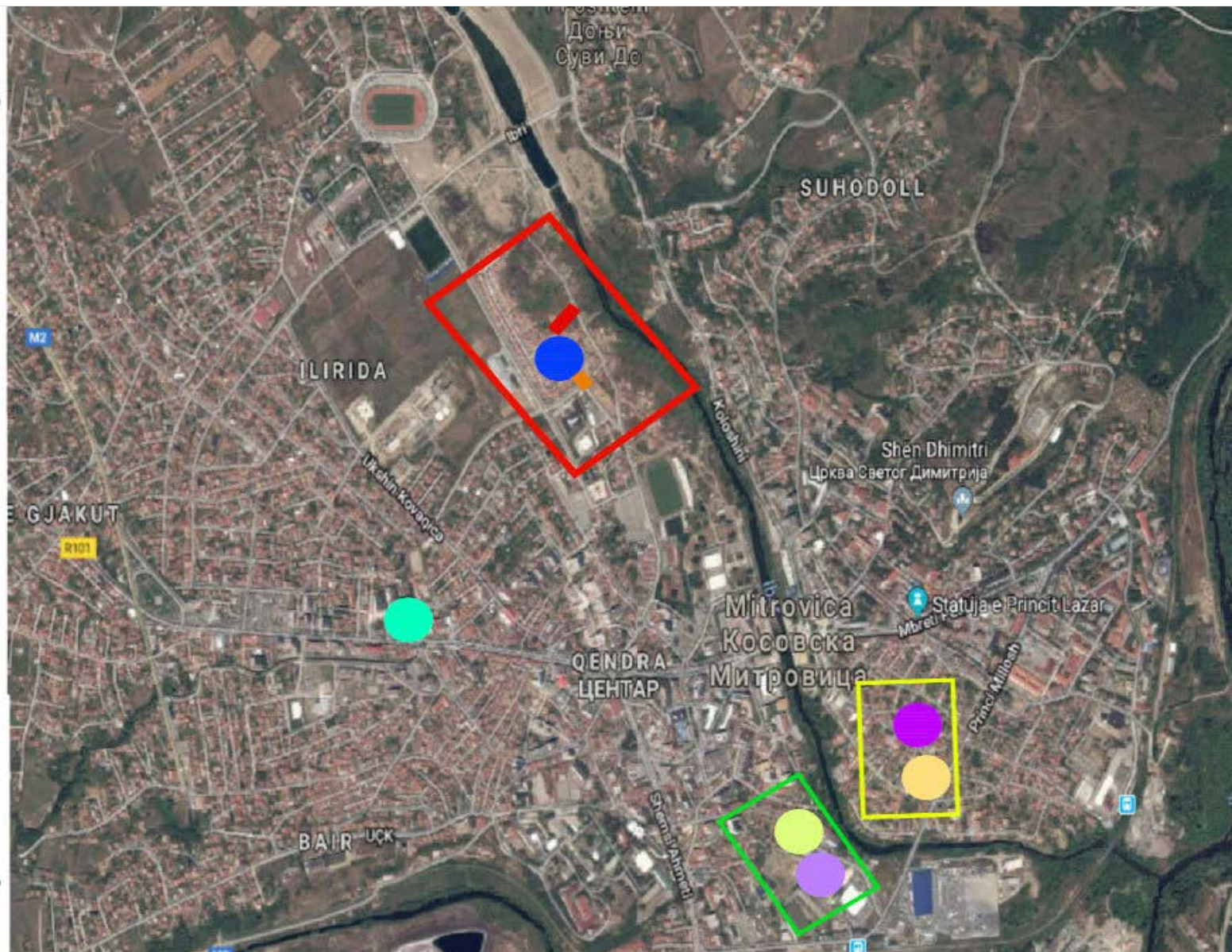
Indirect beneficiaries: local authorities/NGOs and majority community that will benefit from substantial capacity building holding the potential to bring about long-lasting change in their professional performance as well as approach/attitude.

Target groups: 1) local authorities , building whose capacities is vital in order for them to fully assume their role once international support phases out; 2) LNGOs, whose role in linking direct beneficiaries to local authorities is essential in order to create constructive democratic dialogue between government and civil society; 3) the Community Board and Education Working Group, which will become a key tool in the establishment of a transparent and effective representation mechanism.





## Aerial View of the Project Intervention

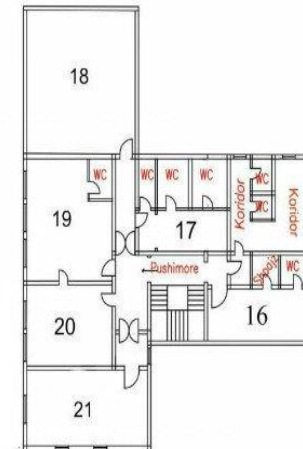




# The Learning and NGO Resource Centre

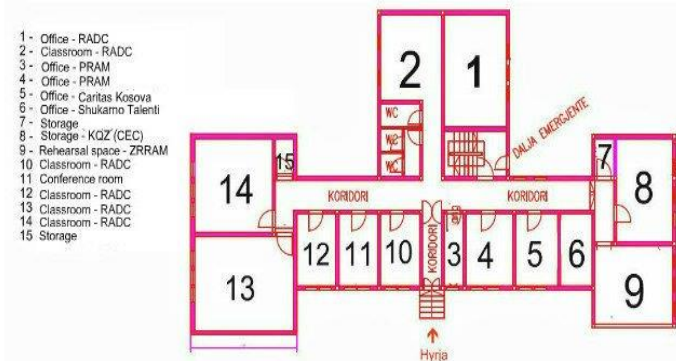


1st floor



- 16 - Office - Empty
- 17 - Storage
- 18 - Media room
- 19 - Office - Gjovljano Mangipe
- 20 - Office - KW4W
- 21 - Community Library - RADC

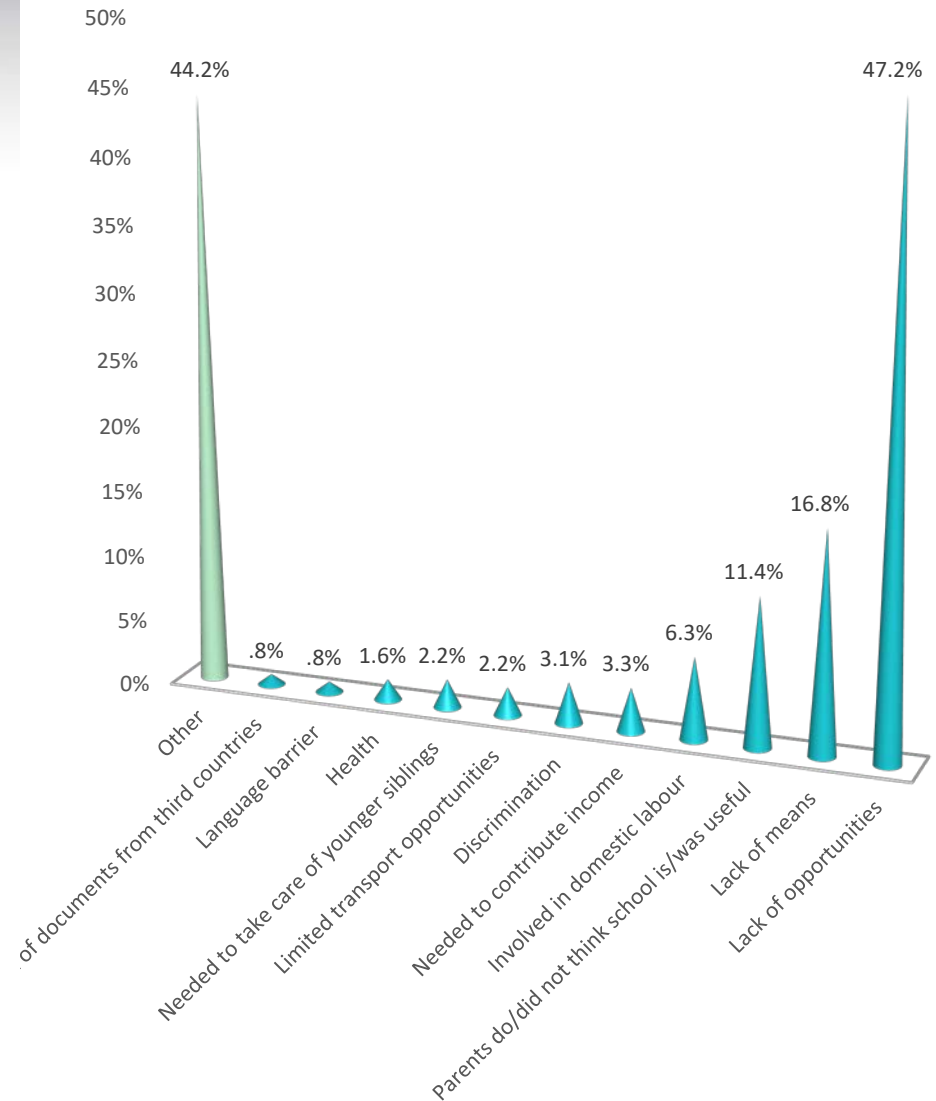
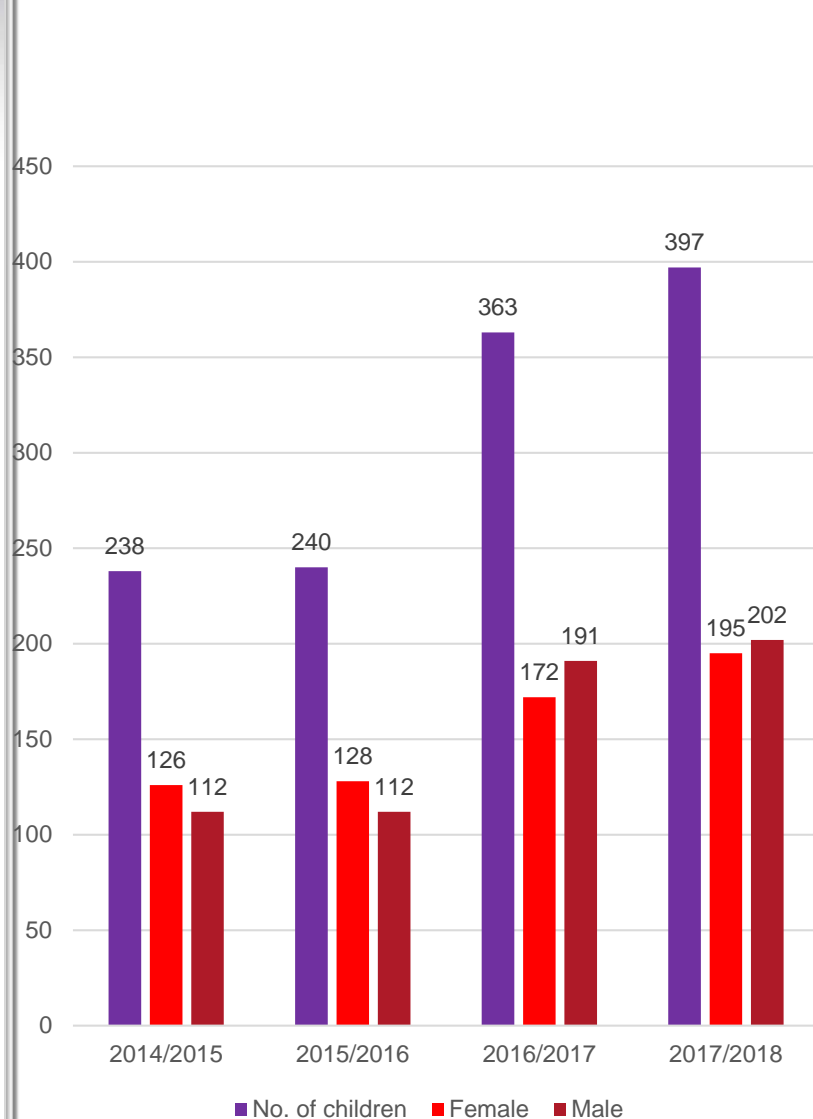
Ground floor



- 1 - Office - RADC
- 2 - Classroom - RADC
- 3 - Office - PRAM
- 4 - Office - PRAM
- 5 - Office - Caritas Kosova
- 6 - Office - Shukarno Talenti
- 7 - Storage
- 8 - Storage - KOZ (CEC)
- 9 - Rehearsal space - ZRRAM
- 10 - Classroom - RADC
- 11 - Conference room
- 12 - Classroom - RADC
- 13 - Classroom - RADC
- 14 - Classroom - RADC
- 15 - Storage

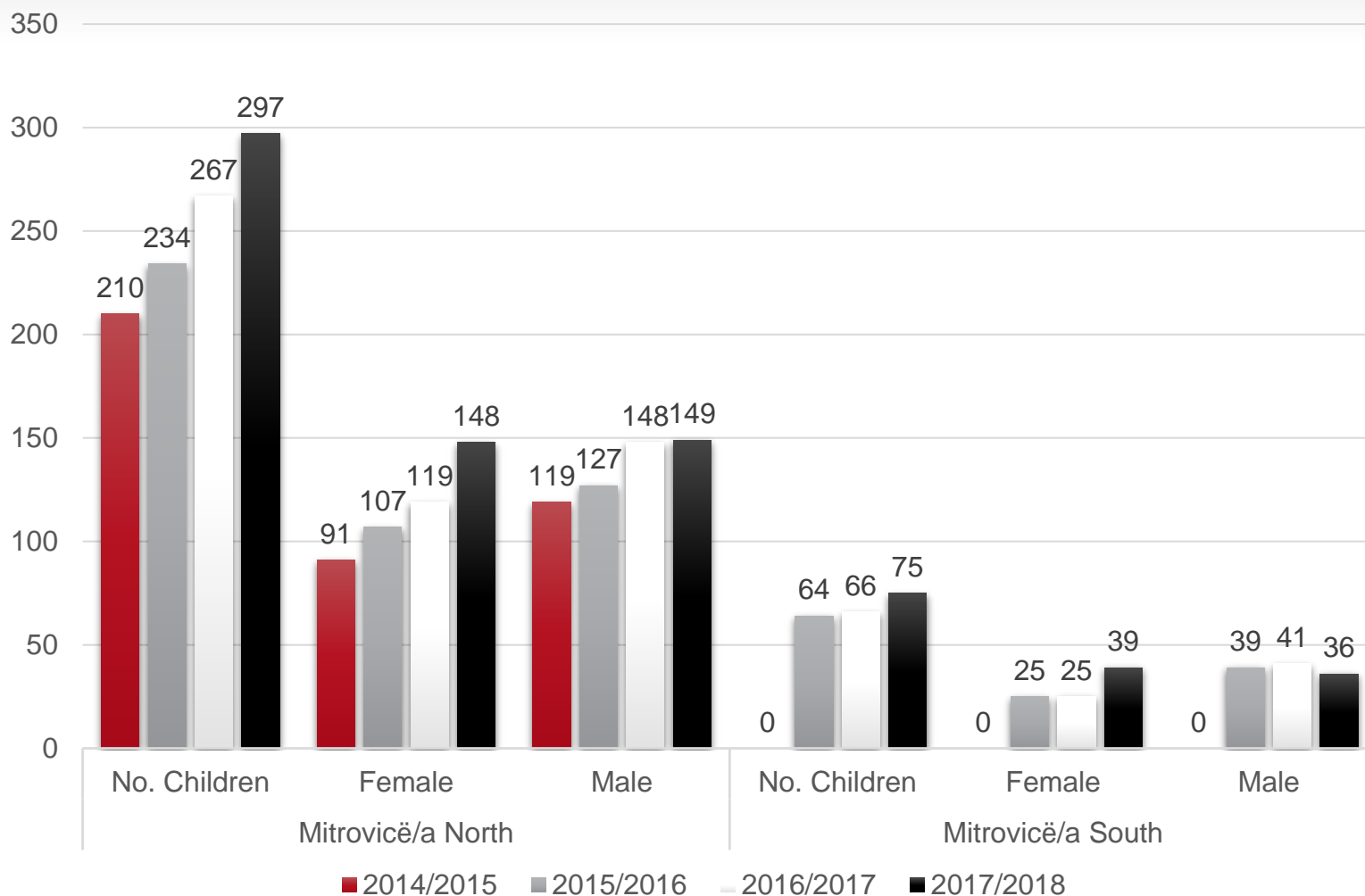
# DRC Learning Centre Initiative

LC Attendance Rate 2014-2018



## Regular School Attendance Rate 2014-2018

### Regular school attendance divided Mitrovica/ë North and South

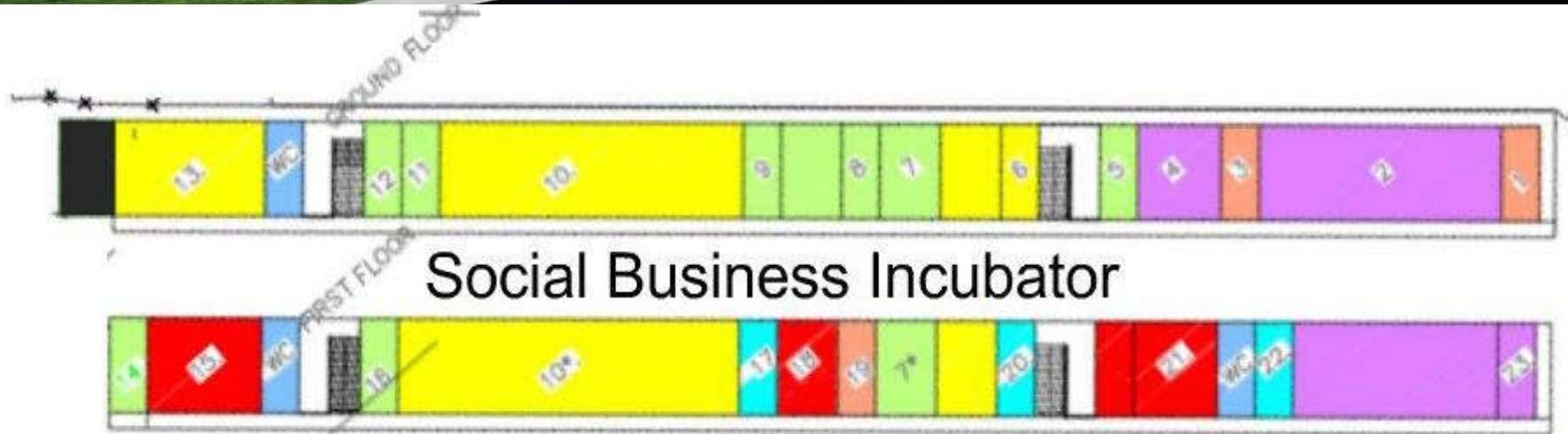


## NGO Resource Centre Implementing Partners Meeting





# Social Business Incubator Initiative



Women Empowerment Centre

SBI businesses

Office/Conference rooms

VTC

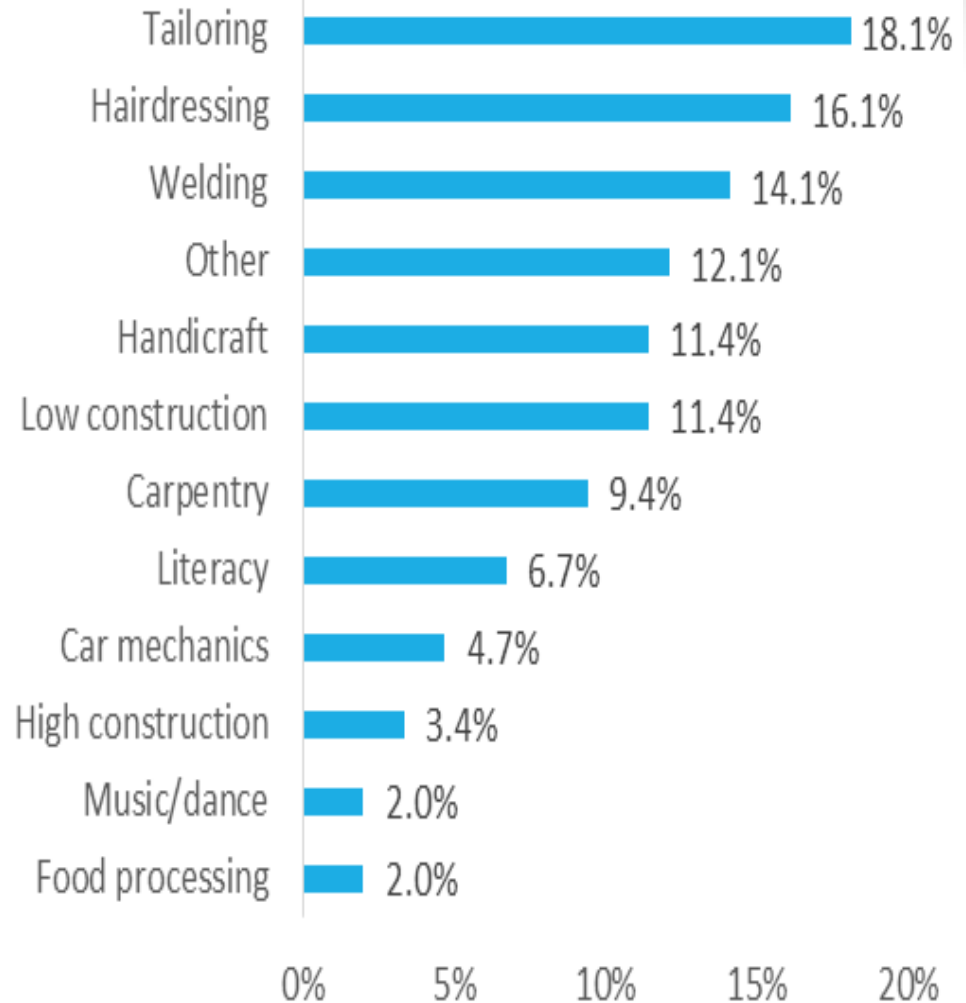
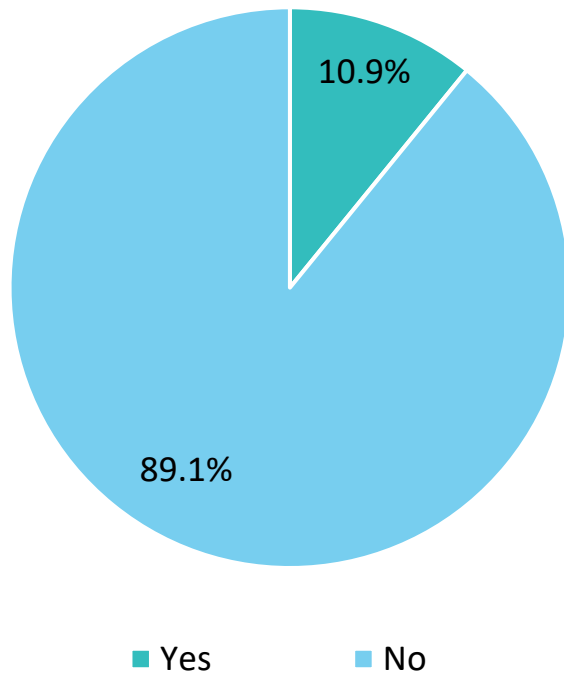
Storage

New Initiatives

Restrooms

## SBI VOCATIONAL TRAINING CENTRE

### Completed Professional/ Vocational Training





# DRC SBI Graduated Businesses in 2017



## STARTUPS GRADUATED

- D.SH LAVANTARIA "LOLA"
- NTSH "PASTERIA" CARPENTRY BUSINESS
- NTSH "PASTERIA" LAUNDRY SERVICE PROVISION
- DPZ "ABIDJA"
- DPZ/AUTO SERVIS "TE NEHATI"
- DPZ/BARBER "MEKI"
- NSH "LE&XHA"
- DPZ "JOT"
- DPZ "BAIR"

# CHALLENGES FORESEEN

- Rigid traditional norms and failure to manage community resistance to change.
- Limitations to the sense of community, social separations based on ethnic, tribal, clanship, political or religious considerations impact this sense of community negatively
- Particular attention paid to support electing new leaders, facilitate the setting-up of committees for particular purposes and stimulate the organization of women and youth.
- The mobilization of women was of particular importance, especially in the context of developing appropriate responses to the needs of children and adolescents.
- This strategy is seen as essential in avoiding the risk of dependence on external assistance and the enduring lethargy and de-motivation that can result from it.
- Staff involved have to be sensitively aware of the concerns and feelings of the community members and to respond to these with respect and patience. It is particularly difficult when the needs expressed by community members cannot be matched with available external resources.
- The task of building the self-confidence and the capacity of communities to make groupings and achieve positive outcomes is a time- and resource consuming process.
- This project with its comprehensive approach has confronted difficulties because it is a time-consuming practice that does not automatically harvest quick or visible outputs.

# Lessons Learnt

- Participatory approach is the best way for a successful implementation of the project.
- Effective communication and transparent decision-making between all concerned actors and stakeholders should be ensured.
- Engagement of local and central authorities was also crucial for project launch and longer-term prospects.
- Targeted support for young people, boys and girls from the communities constituted an investment in future generations: young people from these ethnic groups who are successful in the employment market send a signal to those who follow them that they are welcome and that they have brighter future.
- Promotion and reinforcement of rights, obligations and engagement of municipal authorities and civil society have been crucial for project longer term prospects.
- DRC with its partners came to conclusion that, despite the fact the localization agenda is likely to add value and enhance the effectiveness of support efforts in some contexts, imposing it regardless of context dynamics is likely to produce unsatisfactory results for the effective delivery of support to people in need of direct assistance.

**DRC Support to Roma, Ashkalia and Egyptian  
Communities in Mitrovicë/Mitrovica,**

## Stay updated on the DRC Kosovo\* Programme



Websites:

[www.drc.dk](http://www.drc.dk)

[www.drc-kosovo.org](http://www.drc-kosovo.org) ; [www.sbifm.org](http://www.sbifm.org) ;



Network by sending an e-mail to :

[jasminad@drc-kosovo.org](mailto:jasminad@drc-kosovo.org)



Connect with our partners click [here](#) for list